

Ventilation Restoration (Alfa 33 series 907)

Heater Unit Removal

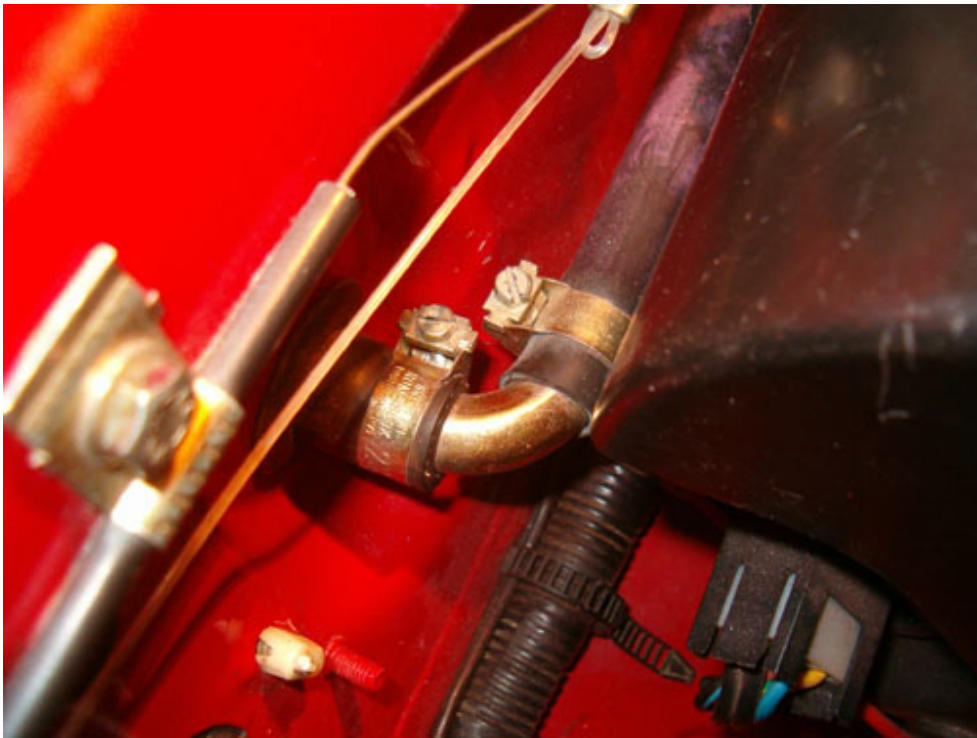
Seems that the project of dealing with Alfas never ends. This time the radiator core decided to give up the ghost. I was able to smell coolant inside the cabin and a quick investigation revealed that coolant was soaking the lower part of the heater assembly. For sure I was frustrated with the case as the ventilation system of Alfa 33 is quite notorious for its setup ... Series 1 and 2 Alfa 33s (series 905) have more complicated system compared to series 3 cars (series 907) but still the one out of series 907 is still quite complex and a hassle to deal with.

My first step was to create a bypass hose in order to minimize coolant loss, excluding the possibility of creating a rust trap in the floor and of course avoiding electrical problems.

I got hold of a garden hose - no more than 1 meter long - and created the bypass.

Things I used or replaced during the repair process:

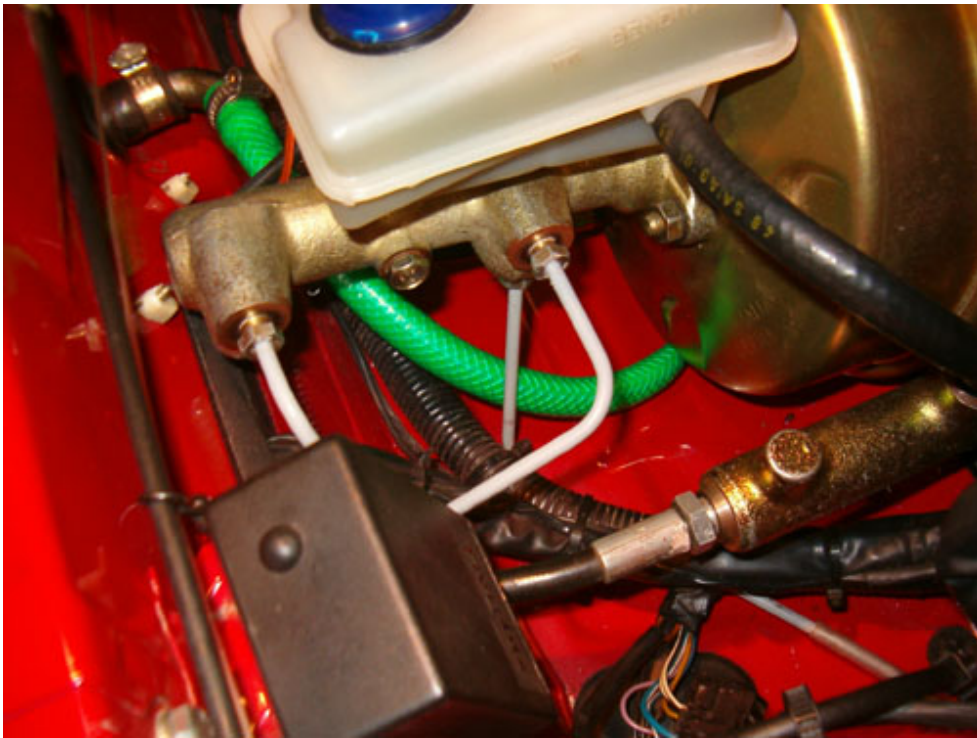
Item	Quantity	e-Per product code
Heater Core (Valeo brand)	1	60538689
Coolant expansion reservoir	1	60504309
Cooling hoses connection (straight pipe)	1	60546327
Cooling hoses connection (T Shaped with one end narrow sized)	1	7537065
Cooling hoses connection (T Shaped with 12 mm ends)	1	60503094
Cooling system flush liquid	bottle of 250 ml	-
New coolant	8 lt.	-



Here you see the 90° metal curve that I will use in order to create the bypass



Notice the outlet piping disconnected and barely seen under the hood latch the inlet piping of the heater core.



Here is the temporary solution of heater core bypass. In the meantime the vehicle can run with no problem (no heating in the cabin and being December ... brrrr)



Let's now start disassembly. First job is to disconnect battery negative terminal since we will deal with the electrical system. Remove the handbrake lever decorative box.



CONSOLE MOUNTING SCREW

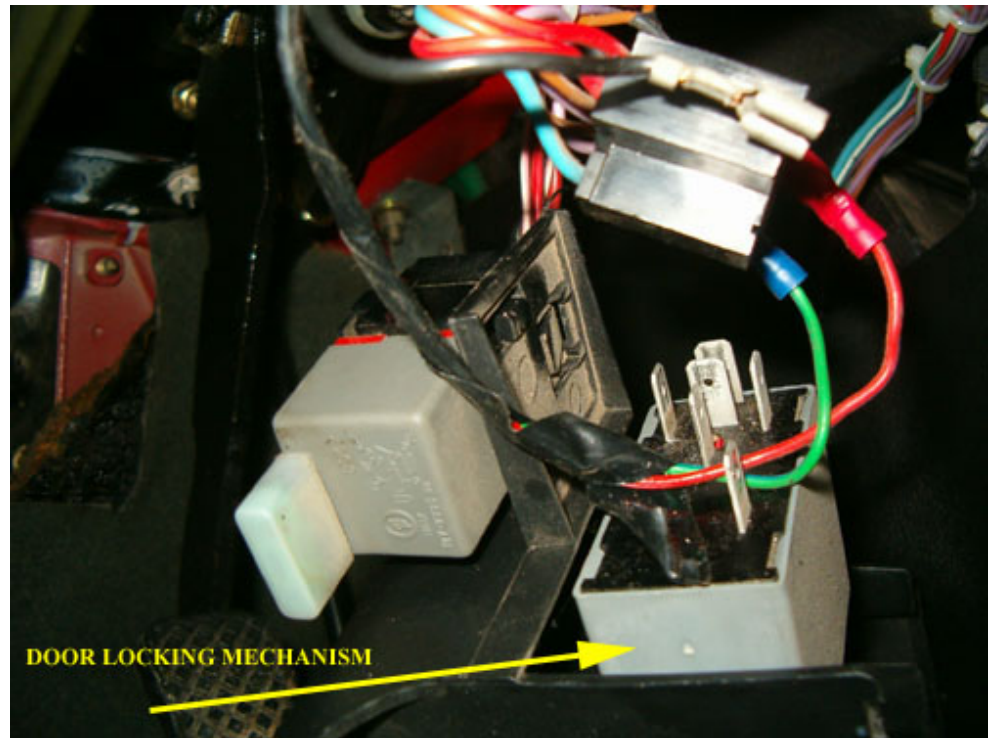
Move on to the console. Remove the designated screw ...



... and then the gear stick mounting screw (11 and 12 mm key)



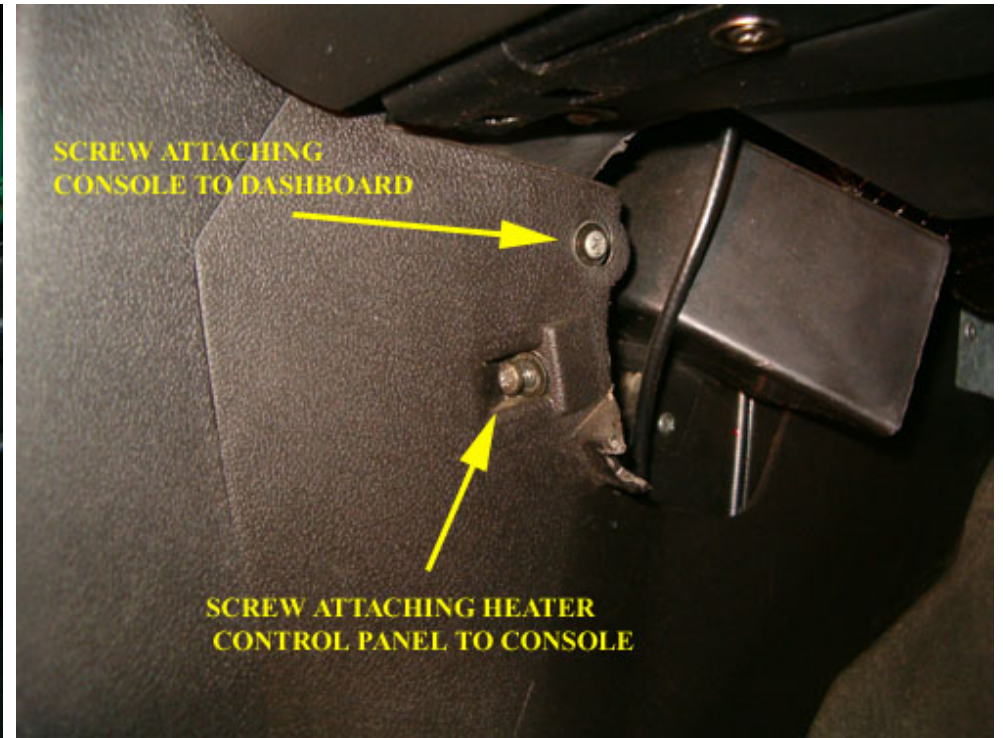
Move on removing the speaker assembly both sides



Disconnect speaker leads and the door locking mechanism connector ...



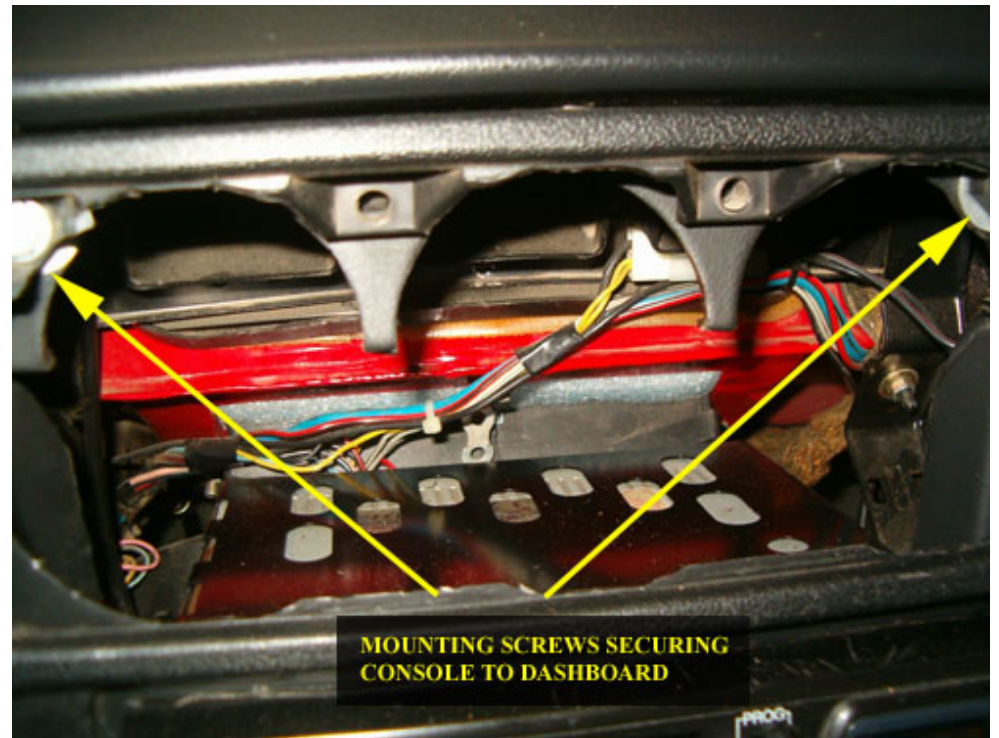
... and heater power supply connector.



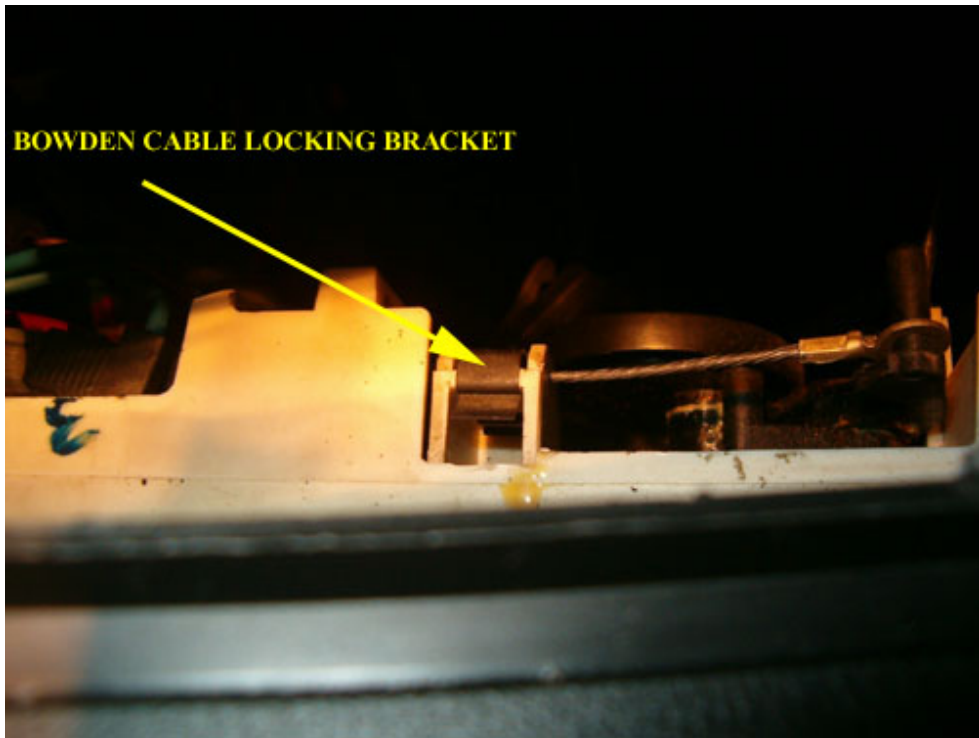
Now let's move on to the mounting screws for the dashboard and heater control panel



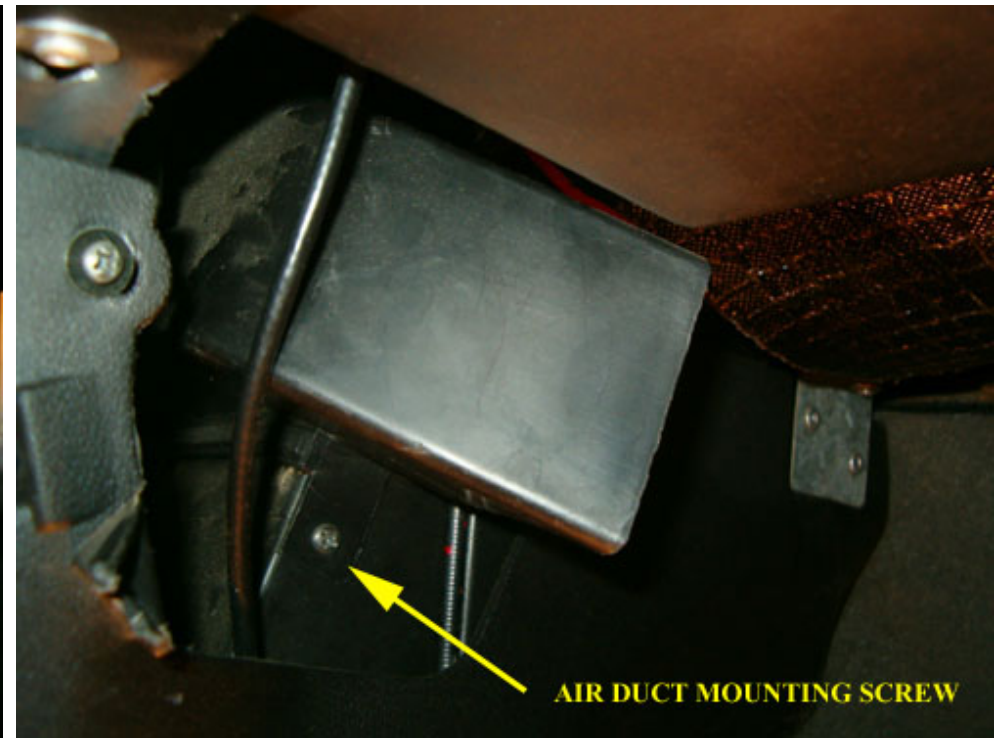
Use a blade to remove the fascia panel. Take it easy as this breaks easily!



Undo the mounting screws designated. Not shown in the picture are the 3 ducts routing air to the face



Go on releasing the bowden cable locking bracket ...



... and the air duct mounting screws. This duct routes air towards the floor or passenger feet



Finally undo the four nuts securing console to chassis (2 per side)



Having disconnected the cigar lighter and ashtray lights slide carefully the console until it is out

The first step of the process is over. Let's move on to heater disassembly